



Itinerary

Pretoria to Cape Town Route

Day 1:

06:30 Register and check-in at **The Pretoria Station Lounge**. Guests enjoy pre-departure drinks. Welcome snacks will be served on-board the train

07:30 Boarding starts. Butlers usher guests to their suites. Suite orientation done by butlers.
Boarding concludes at 08:00am

08:30 The Blue Train departs from Pretoria Station (Will depart earlier once all guests have checked-in)

10:30 – 12:00 First sitting for Brunch
12:30 – 14:00 Second sitting for Brunch

15:30 High tea is served in the Lounge Car.

OFF-THE-TRAIN EXCURSION (Weather & time-permitting)

17:10 The Blue Train arrives at Kimberley Station. Guests disembark and gather at the railway museum, from where they will be ushered to a bus, which transfers them to the Kimberley Open Mine Museum.

17:30 Guests arrive at the Open Mine Museum for a tour of the mine. Guests are first taken to view interesting and historical sites. Guests are also taken onto an enclosed ramp on the edge of the Kimberly hole.

18:35 Guests depart from the Open Mine Museum for Kimberley Station. At Kimberley Station guests are greeted with a glass of sherry. The sherry glass engraved with The Blue Train logo is a memento for guests to keep.

19:10 The Blue Train departs Kimberley Station for the journey Southbound to Cape Town.

After this exciting tour, guests are welcome to refresh themselves and enjoy pre-dinner drinks served at any one of our lounges.

19:30 – 21:00 First sitting dinner
21:15 Second sitting dinner

Remember, dinner is an elegant affair and men are requested to wear a jacket and tie and ladies elegant evening wear.

Guests enjoy post-dinner drinks, Cognacs and Cuban cigars in the Club Car before retiring to bed



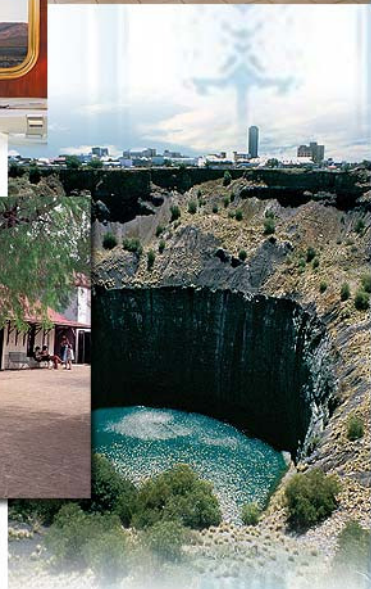
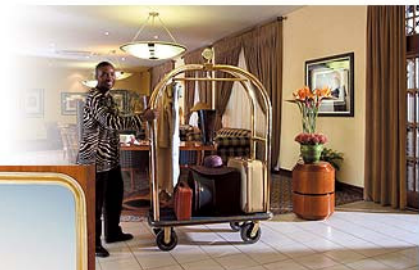
Day 2:

(Next morning)

07:00 - 10:00 Breakfast is served on a first-come-first-served basis.

12:00 – 14:45 Three-course lunch is served at leisure (on a first-come-first-served)

15:00 The Blue Train arrives at **Cape Town Station**. Butlers usher guests to **The Blue Train Lounge**



THE BLUE TRAIN
A WINDOW TO THE SOUL OF SOUTH AFRICA